

Push Button Switches - continued

SPNO Momentary - continued

0.125A @ 125V ac, 0.4A @ 32V ac, 0.1A @ 50V dc IP67 Sealed - continued

Metal round bezel switches:

Black = 519-315 Red = 519-327 Green = 519-339
 White = 519-340 Yellow = 519-352 Blue = 519-364

Metal square bezel switches:

Black = 519-376 Red = 519-388 Green = 519-390
 White = 519-406 Yellow = 519-418 Blue = 519-420

Plastic round bezel switches:

Black = 443-4390 Red = 443-4407 Green = 443-4419 Orange = 443-4456
 White = 443-4420 Yellow = 443-4432 Blue = 443-4444

Mfrs. List No. Bezel: Std Round=59-11+colour, Std square=59-21+colour PBT round bezel: 59-51+colour

Contact rating (resistive)	0.4A @ 32V dc 0.1A @ 50V dc 0.125A @ 125V ac	Dielectric strength	1000V ac
Contact resistance	60mR max. (incl. leads)	Insulation resistance	1000MR
Contacts	Gold plated, palladium nickel	Electrical life @ 20°C	500000 ops
		Mechanical life	1000000 ops
		Operating temperature	-55°C to +105°C

SW327/213271

Colour	Mfrs. List No.	Order Code	Price Each			
			1+	25+	50+	100+
Round Bezel						
Black	49-59111	734-070●	519.00	484.00	458.00	433.00
Red	49-59112	734-081●	519.00	484.00	458.00	433.00
Green	49-59113	734-093●	519.00	484.00	458.00	433.00
White	49-59114	734-100●	519.00	484.00	458.00	433.00
Yellow	49-59115	734-111●	519.00	484.00	458.00	433.00
Blue	49-59116	734-123●	519.00	484.00	458.00	433.00
Square Bezel						
Black	49-59211	734-135●	519.00	484.00	458.00	433.00
Red	49-59212	734-147●	519.00	484.00	458.00	433.00
Green	49-59213	734-159●	519.00	484.00	458.00	433.00
White	49-59214	734-160●	519.00	484.00	458.00	433.00
Yellow	49-59215	734-172●	519.00	484.00	458.00	433.00
Blue	49-59216	734-184●	519.00	484.00	458.00	433.00

Order Code	Price Each				
	1+	25+	50+	100+	+
Metal Bezel Switches	403.00	381.00	348.00	315.00	--
Plastic Bezel Switches	260.00	242.00	221.00	200.00	--

311633

SPNO and SPNC Momentary and Latching
 10A @ 250V ac, Impact Resistant



Flush actuator Raised actuator Domed actuator Rotary actuator Large circular actuator
 L=31.0, Dia=30.0 (domed actuator=35.0, large circular actuator=46.5),
 Panel cut-out (double flat)=22.0 x 20.0, Depth behind panel=23.0, Max. panel thickness=6.0

- Impact resistant and panel sealed to IP679
- Constructed from NCB481/1965 approved non-sparking zinc alloy
- Momentary and latching SPNO/SPNC pushbuttons and matching
- 2 position snap-action SPNO/SPNC latching rotary switches

Contacts	Silver	Insulation resistance	1000MR
Minimum contact rating	10mA @ 5V dc	Electrical life @ 20°C	100000 ops
Contact resistance	<25mR	Mechanical life	1000000 ops
Dielectric strength	1000V rms	Operating temperature	-40°C to +135°C

Mfrs. List No. Flush=76-9410/439088B + colour, Raised=76-9420/439088B + colour
 Domed=76-9450/439088B + colour, Rotary=76-9470/439088G
 76-9430/439088N Blue=607-630 76-9440/439088N Blue=607-642

SW184/222299

Colour	Order Code	Price Each				
		1+	10+	25+	50+	+
Flush Actuator, Momentary						
Black	109-280●	803.00	764.00	749.00	660.00	--
Green	109-281●	803.00	764.00	749.00	660.00	--
Red	109-282●	803.00	764.00	749.00	724.00	--
Blue	273-120●	850.00	779.00	728.00	641.00	--
Raised Actuator, Momentary						
Black	109-283●	803.00	764.00	749.00	660.00	--
Green	109-284●	803.00	764.00	749.00	660.00	--
Red	109-285●	803.00	764.00	749.00	660.00	--
Blue	273-132●	850.00	779.00	728.00	641.00	--
Domed Actuator, Momentary						
Black	241-507●	986.00	944.00	923.00	811.00	--
Green	241-519●	986.00	944.00	921.00	810.00	--
Red	241-520●	1,022.00	918.00	893.00	785.00	--
Large Circular Actuator, Latching						
Blue	607-630●	1,011.00	964.00	945.00	832.00	--
Large Circular Actuator, Momentary						
Blue	607-642●	1,137.00	1,077.00	1,064.00	936.00	--
Rotary Actuator, Latching						
Green	241-532●	996.00	953.00	929.00	816.00	--
Red	241-544●	996.00	954.00	930.00	817.00	--

SPNO and SPNC Momentary
 5A @ 115Vac or 28Vdc, 2.5A @ 250Vac

OTTO Controls



L=21, Dia=17.5
 Panel cut-out=11.9 x 11.3 (single flat), depth behind panel=14.0

- Attractive flush and raised dome actuator button options
- SPNO and SPNC set of gold contacts
- Positive tactile feedback with momentary snap action
- Black thermoplastic case and bezel, sealed to IP64
- Rear panel seal with potted contacts

Contacts	Gold plated silver alloy	Operating temperature	-55°C to +85°C
Mechanical life	1000000 ops		

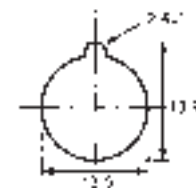
SW172/213134

Colour	Order Code	Price Each				
		1+	5+	10+	25+	+
Flush Dome Actuator						
Red	113-8748●	393.00	372.00	346.00	322.00	--
Black	113-8749●	393.00	372.00	346.00	322.00	--
Yellow	113-8750●	393.00	372.00	346.00	322.00	--
Blue	113-8752●	393.00	372.00	346.00	322.00	--
Grey	113-8754●	393.00	372.00	346.00	322.00	--
White	113-8755●	393.00	372.00	346.00	322.00	--
White	311-3565	393.00	372.00	346.00	322.00	--
Raised Dome Actuator						
Red	113-8756●	393.00	372.00	346.00	322.00	--
Black	113-8757●	393.00	372.00	346.00	322.00	--
Yellow	113-8758●	393.00	372.00	346.00	322.00	--
Green	113-8759●	393.00	372.00	346.00	322.00	--
Blue	113-8760●	393.00	372.00	346.00	322.00	--
Grey	113-8761●	393.00	372.00	346.00	322.00	--
White	113-8762●	393.00	372.00	346.00	322.00	--

Membrane, SPNO Momentary
 125mA @ 48V dc



Dia=18, H=4.2 Pin pitch=7.62 H=4.2, W=18, D=18 Pin pitch=7.62



- Push-fit panel mounting membrane switches with a tactile feel
- Coloured actuator snaps on to black body
- Straight pin connections allow PCB mounting or wirewrap
- 'O' ring kit available, seals switch to IP65

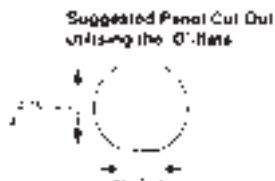
Round Bezel			Square Bezel		
Switch	Mfrs. List No.	Order Code	Switch	Mfrs. List No.	Order Code
Red	12411104793	150-242	Red	12411100793	150-247
Yellow	12411104791	150-243	Green	12411100795	150-248
Black	12411104797	150-244	Black	12411100797	150-249
Green	12411104795	150-245	Yellow	12411100791	150-250
Grey	12411104796	150-246	Grey	12411100796	150-251
Actuator Colour 'O' Ring Sealing Kit 0098.9201 148-921					
Contact resistance	110 to 115mR		Mechanical life	1000000 ops	

SW1/213066

SPNO Momentary - 49-59 Series
 0.4A @ 32V ac, 'Sealed'



L=23.8, Bezel=19.8 x 19.8 L=23.1, Bezel dia.=19.8



- Industry standard 16mm cut-out switching
- IP67 rating
- UL recognised
- Gold contacts, suitable for logic
- Ideal for retro-fitting
- 500mm lead termination
- Choice of 6 colours